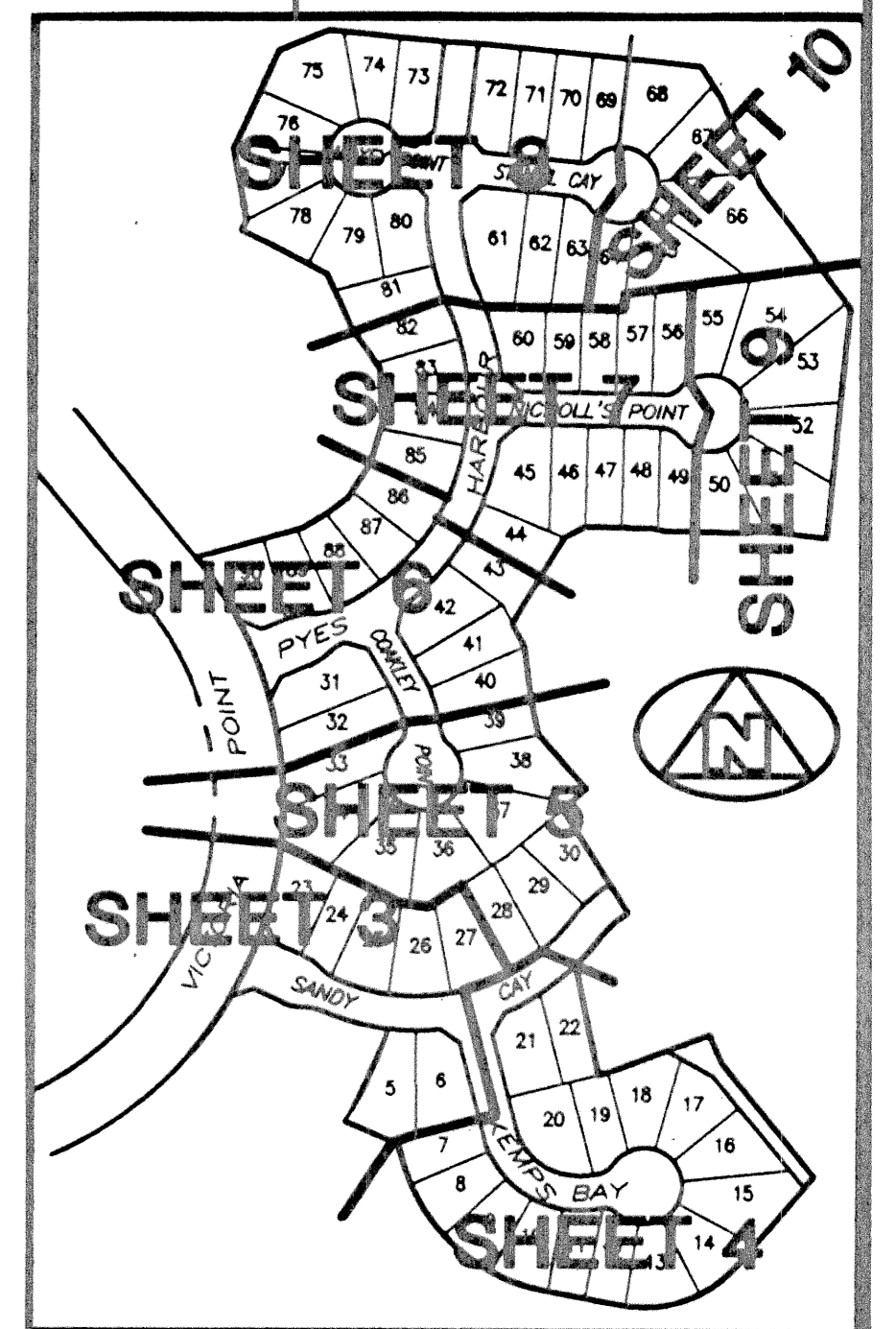
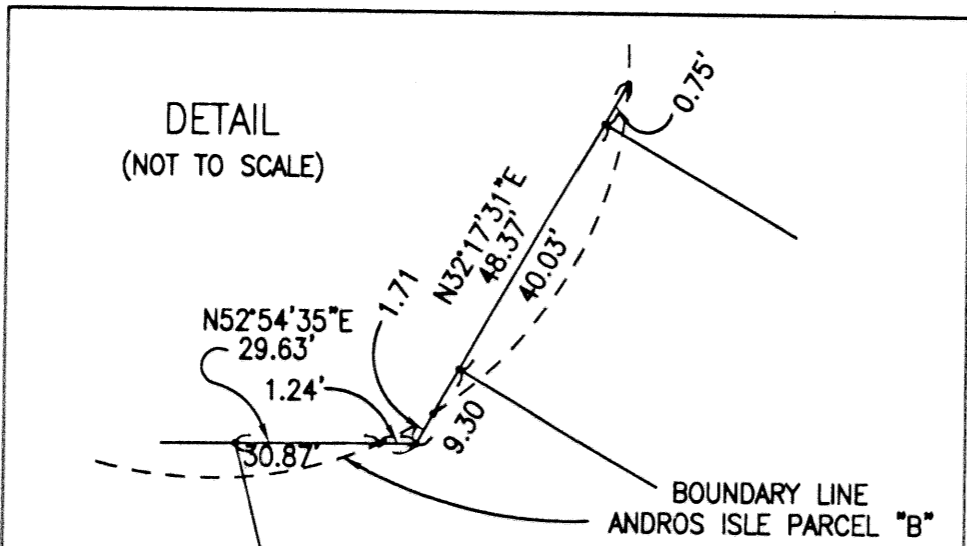
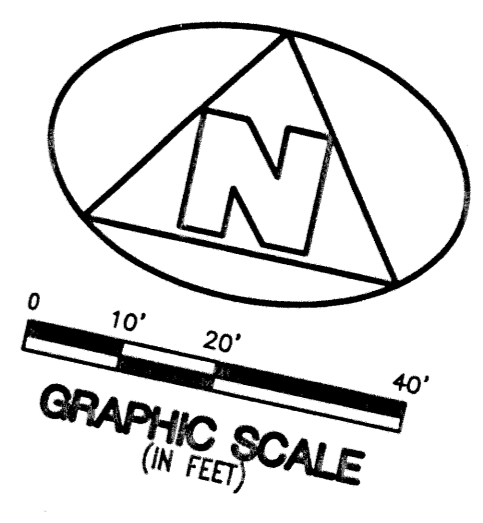


(A PART OF A RESIDENTIAL PLANNED DEVELOPMENT)

BEING A REPLAT OF A PART OF ANDROS ISLE PARCEL "B", RECORDED IN PLAT BOOK 82, PAGE 1, AND BEING A REPLAT OF A PART OF PARCEL "C", ANDROS ISLE, AS RECORDED IN PLAT BOOK 81, PAGE 87, AND LYING IN SECTION 20, TOWNSHIP 43 SOUTH, RANGE 42 EAST, CITY OF WEST PALM BEACH, PALM BEACH COUNTY, FLORIDA



**EASEMENT NOTE:**  
THE LANDSCAPE AND UTILITY EASEMENTS LYING WITHIN THE PROPERTY BEING PLATTED, AS SHOWN HEREON, ARE AS PER THE PLAT OF ANDROS ISLE PARCEL "B", AS RECORDED IN PLAT BOOK 82, PAGE 1, UNLESS OTHERWISE NOTED.

**CURVE DATA LEGEND:**  
R = RADIUS  
L = ARC LENGTH  
CA = CENTRAL ANGLE  
LCB = LONG CHORD BEARING  
CHD = CHORD

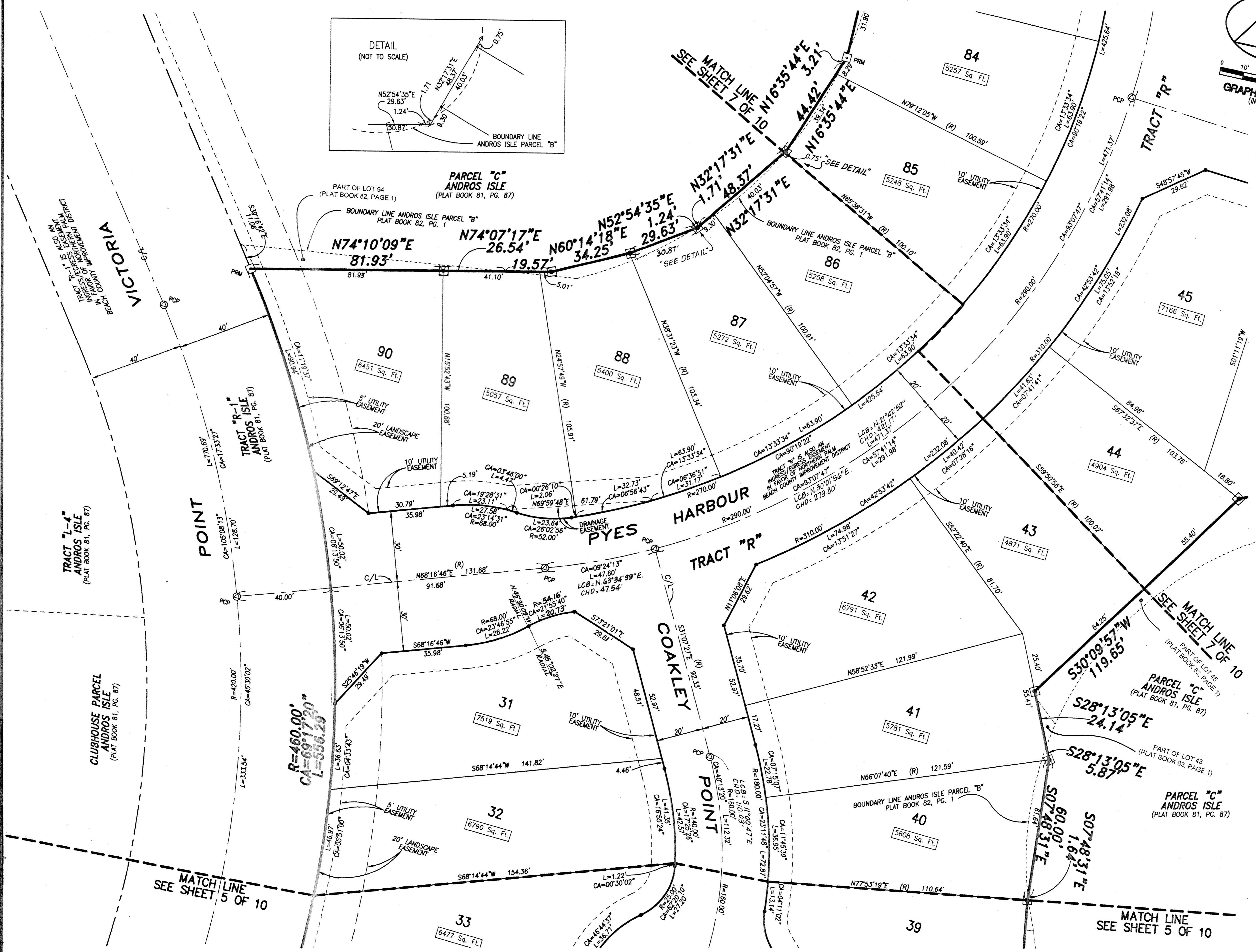
- SURVEYOR'S NOTES AND LEGEND:**
1. THE BASE BEARING, AS SHOWN HEREON, IS N66°13'12"W ALONG THE SOUTHERLY BOUNDARY OF PARCEL "B" AS SHOWN ON THE PLAT OF ANDROS ISLE PARCEL "B", RECORDED IN PLAT BOOK 82, PAGE 1, PALM BEACH COUNTY, FLORIDA.
  2. IN THOSE INSTANCES WHERE UTILITY/DRAINAGE STRUCTURES ARE CONSTRUCTED IN CONFLICT WITH THE PLATTED PERMANENT CONTROL POINTS (P.C.P.) POSITION, STRADDLERS MONUMENTED AS PERMANENT CONTROL POINTS WILL BE SET TO REFERENCE THE PLATTED P.C.P. POSITION.
  3. LINES WHICH INTERSECT CURVES ARE NOT RADIAL, UNLESS OTHERWISE NOTED.
  4. (R) DENOTES RADIAL LINE
  5. C/L DENOTES A CENTERLINE
  6. [Symbol] DENOTES A SET #2424 PERMANENT REFERENCE MONUMENT (P.R.M.)
  7. [Symbol] DENOTES A SET #2424 PERMANENT CONTROL POINT (P.C.P.)
  8. [Symbol] DENOTES A FOUND #2424 PERMANENT REFERENCE MONUMENT (P.R.M.)
  9. [Symbol] DENOTES A FOUND #2424 PERMANENT CONTROL POINT (P.C.P.)

THIS INSTRUMENT WAS PREPARED BY WM. R. VAN CAMPEN, R.L.S., IN AND FOR THE OFFICES OF BENCH MARK LAND SURVEYING & MAPPING, INC., 4152 WEST BLUE HERON BOULEVARD, SUITE 121, RIVIERA BEACH, FLORIDA

**BENCH MARK**  
Land Surveying and Mapping, Inc.  
4152 West Blue Heron Blvd., Suite 121, Riviera Beach, FL 33404  
Fax (561) 844-9659 Phone (407) 848-2102

**RECORD PLAT**  
**ANDROS ISLE RE-PLAT OF PARCEL "B"**

DWN	D.J.M.	FB	DATE	4-1-98	WO.#	P.300B
CKD	FILE	B8-Adwg	SCALE	1" = 20'	SHEET	6 OF 10



SUBDIVISION \* Andros Isle  
BOOK # 83  
FLOOD ZONE  
QUAD #  
SE  
PUD NAME City of West Palm Beach

Replat Parcel B  
PAGE 10  
FLOOD MAP  
ZONING  
ZIP CODE  
TAZ 1093

MATCH LINE  
SEE SHEET 5 OF 10

MATCH LINE  
SEE SHEET 5 OF 10

SEE MATCH LINE  
PART OF LOT 45  
ANDROS ISLE  
(PLAT BOOK 82, PAGE 1)

SEE MATCH LINE  
PART OF LOT 43  
ANDROS ISLE  
(PLAT BOOK 82, PAGE 1)